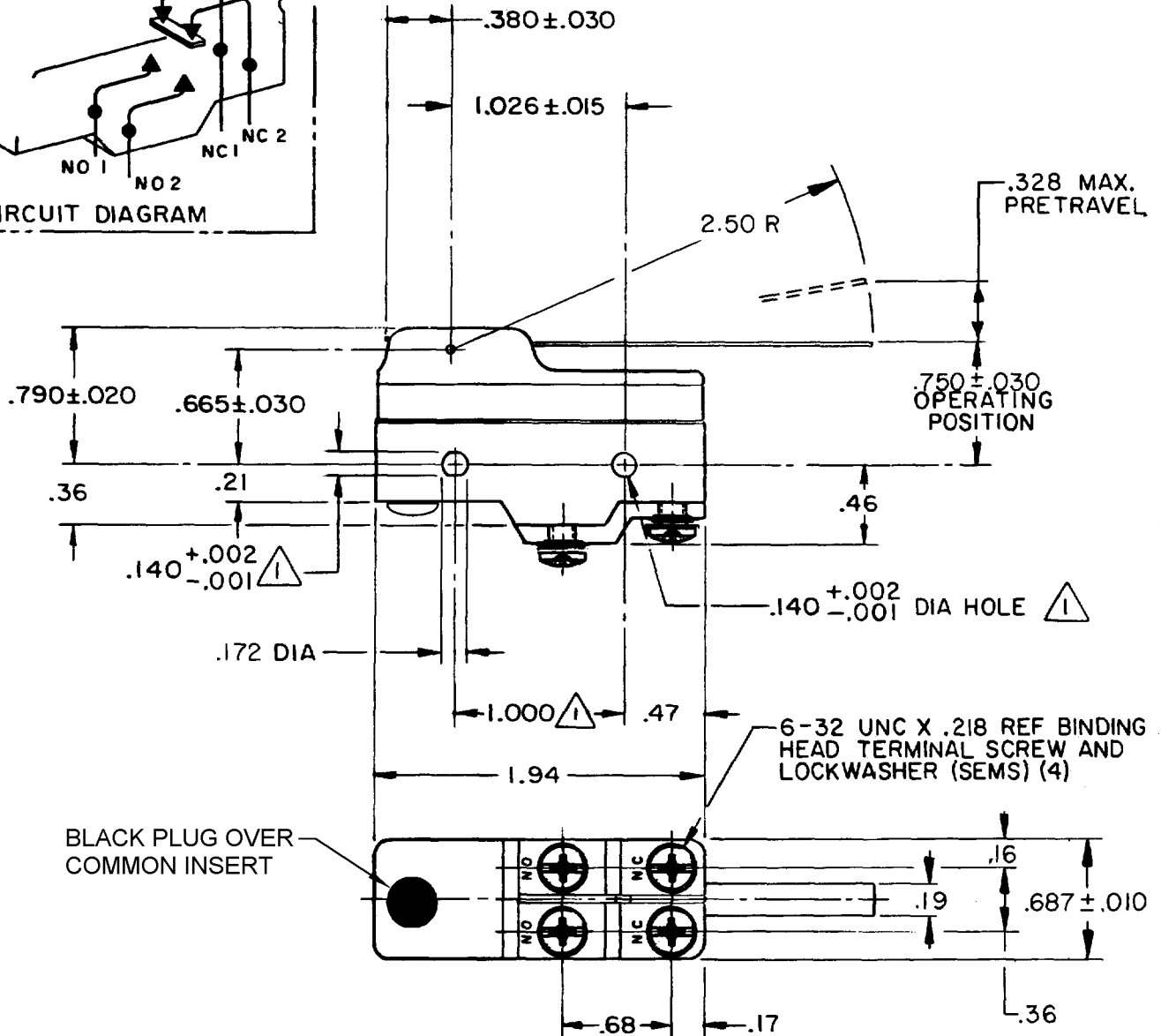
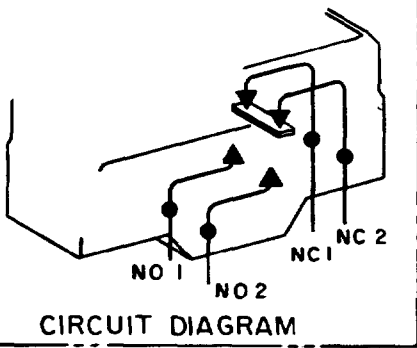


MICRO SWITCH

FREEPORT ILLINOIS, U.S.A
A DIVISION OF HONEYWELL
FED. MFG. CODE 91929

SWITCH-BASIC

BZ-2AW842444T

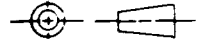


NOTES

- 1 MOUNTING HOLES WILL ACCEPT PINS OR SCREWS OF .139 MAX DIA ON 1.000 ± .002 CENTERS
- 2 - SUITABLE ONLY FOR APPLICATIONS IMPARTING A RAPID STROKE TO THE SWITCH PLUNGER
- 3 - SWITCH IS SUITABLE FOR 400°F USE. NB-SWITCH CHARACTERISTICS MAY SHIFT AT ELEVATED TEMPERATURE

THIS DRAWING COVERS A PROPRIETARY ITEM AND IS THE PROPERTY OF MICRO SWITCH, A DIVISION OF HONEYWELL. THIS DRAWING IS NOT TO BE COPIED OR USED WITHOUT THE APPROVAL OF MICRO SWITCH.

THIRD ANGLE PROJECTION



CHARACTERISTICS

OPERATING FORCE ----- 2 OZ MAX
RELEASE FORCE ----- 1/8 OZ MIN
DIFFERENTIAL TRAVEL ----- .020-.100
OVERTRAVEL ----- .219 MIN

ELECTRICAL DATA

CONTACT ARRANGEMENT
(SEE CIRCUIT DIAGRAM)

L73

15A 125, 250 OR 480 VAC
1A 125 VDC, 0.5A 250 VDC
1/4 HP 125 VAC, 1/2 HP 250 VAC



SCALE FULL

DO NOT SCALE PRINT

TOLERANCES

APPLY TO DESIGN UNITS. CONVERSIONS ARE ONLY FOR REFERENCE. UNLESS NOTED TOLERANCES ARE 2

DIM.	TOL.	DIM.	TOL.
mm	mm	in	mm/in
NO PLACES	X	1/4	0.8/0.3
TWO PLACES	X,X	0.4/0.16	0.38/0.15
THREE PLACES	X,XX	0.15/0.06	0.13/0.05
ANGLE		X,XXX	

DESIGN UNITS

SI METRIC

US CUSTOMARY

WEIGHT

CATALOG LISTING
BZ-2AW842444T
PAGE 1 OF 1

M

DRAWING NUMBER

5

ISSUE

REPLACES X81315-BZ

RELEASE NO. PR-13865

CHECK

REVISIONS

A	0063663	J A P	11 AUG 88
B	0065010		
T	J A	31 JUL 89	
C	CO-69351-D	JWB	18 JUL 91
D	207512		

CSL 24 FEB 03

CHECK

15 MAY 85

85

CHECK

6

MAY

6

6

RASTER

FO-52848-A

DRAWN

T S K